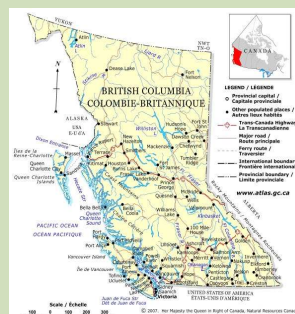


## British Columbia



- 947,800 sq. km
- Land base: 90 million ha
- 60 million ha are forested- 90% in gov control
- 5% of the global coniferous forest
- 20% of the global temperate boreal forest

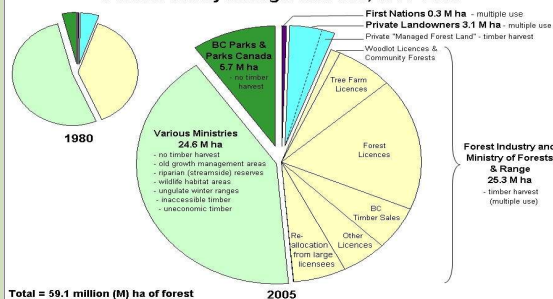


**Provincial harvest - 85 million m<sup>3</sup> annually**

- 75% - Large industry with processing facilities
- 19% - Crown Corporation for open log market
- 4% - Salvage, Wood Lots, Pulpwood, Reserve
- 1% - First Nations
- 1% - Community Forest Agreement Program

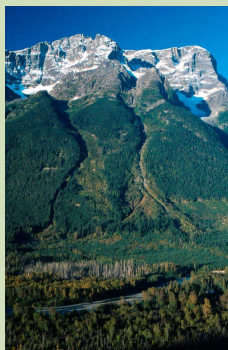


### Forest Area by Manager and Use, 1980–2005



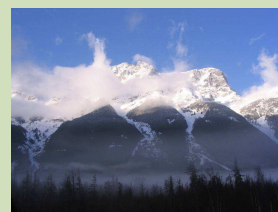
## The Community Forest Agreement

- Began as a pilot in 1998
- Operates on a specified area
- 25 year renewable long term
- Annual harvest target
- Currently a 5 year probation period



# The Community Forest Agreement

- Distributes exclusive rights to harvest timber
- Opportunity to manage beyond just timber
- 52 communities are operating or in the planning stages



### Government Objectives for the Community Forest

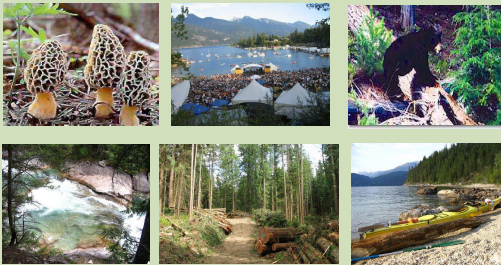
- Long-term community management
- Manage for a range of community priorities
- Diversification
- Community involvement
- Environmental stewardship
- Innovation
- Safety
- Strengthen relationships

*"Community Forests own the principle of social license. They have the ability to pilot ideas and innovate in the way they manage their land base...they have an opportunity like no other tenure in the past."*

Pat Bell, Minister of Forests

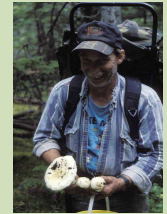


### Application Process - Requires a management plan that includes all values



### Non Timber Forest Resources

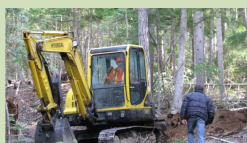
- Legislation gives rights to harvest and collect fees for NTFRs
- No regulation to guide how this is done
- First Nations rights and title must first be considered



### Legal Entity and Governance

Range of structures - limited company, corporation, limited partnership, non-profit society, cooperative

Board models - municipally elected officials, appointees from the community, chief and council, 50/50 partnerships between two communities, elected from the membership



### Community Forest Benefits for the Westbank First Nation

- Jobs and steady employment
- Ability to gather new data important to the First Nation community
- Funding for special projects including education, health, seniors, youth and children's services



British Columbia  
Community Forest  
Association

### Sunshine Coast Community Based Partnerships

- 2500 m3 per year of low grade cedar
- 22 FTEs
- \$70 m3 above market price







West Coast Log Homes

British Columbia  
Community Forest  
Association

### Likely First Response Vehicle




British Columbia  
Community Forest  
Association

### Forest Management Education




### Burns Lake Community Forest





Recreation



British Columbia  
Community Forest  
Association



### Challenges

- Climate change
- Legacy of past practices

British Columbia  
Community Forest  
Association

### Challenges

British Columbia  
Community Forest  
Association

### Responses

- Long term commitment
- Diversification through regional cooperative marketing
- Value added initiatives
- Bio-energy tenures
- Carbon sequestration
- Adapting to climate change through innovation





## BCCFA - Local land, local people, local decisions

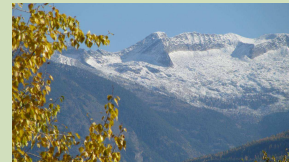
### Provincial Policy

### Education & Networking



## The BCCFA Network

Community based, grass roots  
Leadership is trusted and accountable to the members  
Cooperation, partnerships and inclusion  
Focus on what we do well, not on doing everything  
Collaborative, solutions based approach with government  
Non-political



## Ongoing Advocacy



- Long term stewardship through area-based tenures
- More Community Forest Agreements
- Large enough to be efficient, viable and provide community benefits
- Expansion of open and competitive log markets
- Appropriate pricing system

## First Nations Outreach

"The community forest has allowed for the spiritual connection on the land to be re-established. But they don't call it a community forest at home, they call it home."

Mike Robertson, Senior Policy Advisor  
Cheslatta Carrier Nation



## Annual Conference - Networking, Learning and Planning

2009 Conference and AGM  
Port Alberni May 28 - 31, 2009



Sechelt Conference 2008

"In community forestry,  
we don't just manage the land.  
We wrap our hearts around it."  
Robin Hood





BCCFA  
[info@bccfa.ca](mailto:info@bccfa.ca)  
[www.bccfa.ca](http://www.bccfa.ca)

